



CSA-B125.1-18
ASME A112.18.1-2018
NFS/ANSI 61-2016



PATENT NUMBERS
U.S. 5,505,227, 6,254,057, 6,382,585
Canadian 2,109,684
European 0654628
International & Other Patents Pending

T6052 Series Faucet

INSTALLATION INSTRUCTIONS

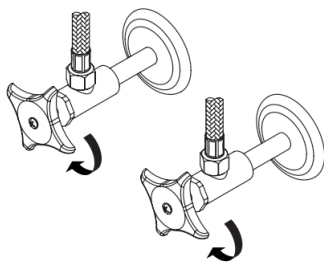
TOOLS



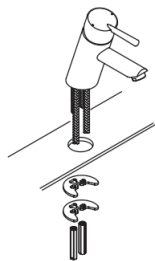
WARNINGS AND NOTES

Check with local plumbing code requirements before installation. This product should be installed by a local listed plumber. **Do not use plumbers putty on threads.**

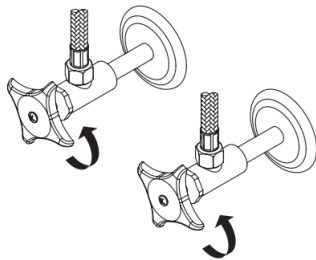
INSTALLATION STEPS



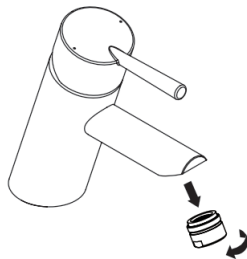
1. Shut off water supply. Remove old faucet. Clean mounting surface in preparation for new faucet.



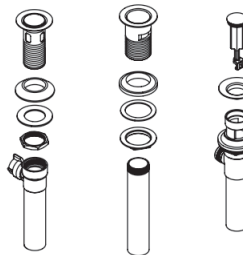
2. Slide round gasket over inlet supply hoses and mounting bolts. Feed supply hoses and mounting bolts through hole in countertop. Slide rubber clamp gasket over installation bolts then the metal mounting plate. Secure with included



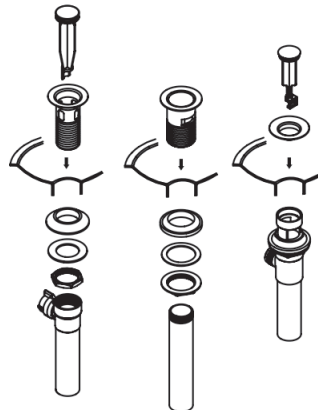
3. Connect faucet supply lines to supply stops. For 1/2" connections you must use a 3/8" to 1/2" adapter (not provided). Turn on water supply.



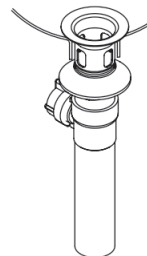
4. IMPORTANT: After installation is complete, remove aerator and run water for at least 30 seconds in the warm position to flush debris from the lines. Reinstall aerator.



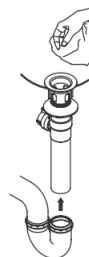
5. Remove flange from drain body.



6. Place a ring of plumbers putty on the bottom of the flange and apply Teflon tape on the threaded tailpiece. Thread tailpiece to the drain body. Insert flange through drain hole and attach drain body to the flange from under the sink.



7. Ensure pivot rod hole on the pop-up body faces rear of sink. Tighten lock nut securely with a wrench.



8. Connect pop-up tail piece to the trap (check manufacturer's instructions) and remove excess putty.